

Description :

Powder Coated Aluminium Switchbox to IP67 fitted with 2 x 2 Wire Proximity sensors for indication of fully open and fully closed positions. Solid and compact design with high visibility beacon indicator. Captive cover bolts are safely retained during installation and maintenance. The spring loaded splined cams are easily adjustable with no tools required. Dual cable entries are provided. The switchbox is mounted to the actuator using a NAMUR standard 'Safemount' bracket.

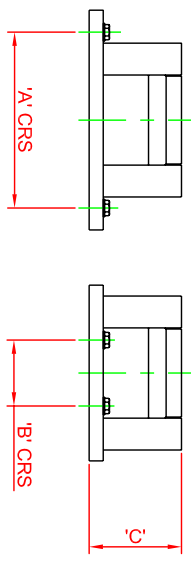
Standard Specification :

- Enclosure Material : Die Cast Aluminium
- Enclosure Rating : IP67
- Enclosure Finish : Polyester powder coating (Black)
- Shaft Material : Stainless Steel
- Cable Entries : 2 x M20 (Options PG13.5 & 1/2"NPT)
- Limit Switch Type : 2 x P & F NJ2-V3-N Proximity Sensors
- Voltage/Amps : 8V DC
- Ambient Temperature : -20° to +80° C

Options :

- Enclosure Rating : IP68
- Enclosure Finish : Various colours
- Beacon Indicator : 3 Way Indication

Mounting Bracket



Bracket	A	B	C	Application
MBP-001	80	30	42	80 x 30 x 20
MBP-002	80/130	30	52	80 x 30 x 30 130 x 30 x 30

