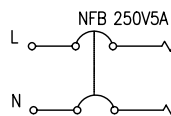


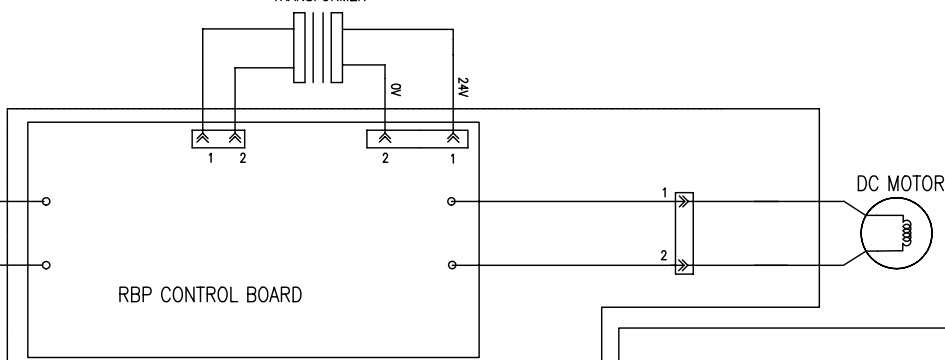
CUSTOMER SUPPLY
FIELD WIRING

CONTROLLER & ACTUATOR ASS'Y



POWER SOURCE	
1φ	110V
1φ	220V
50/60HZ	

TRANSFORMER



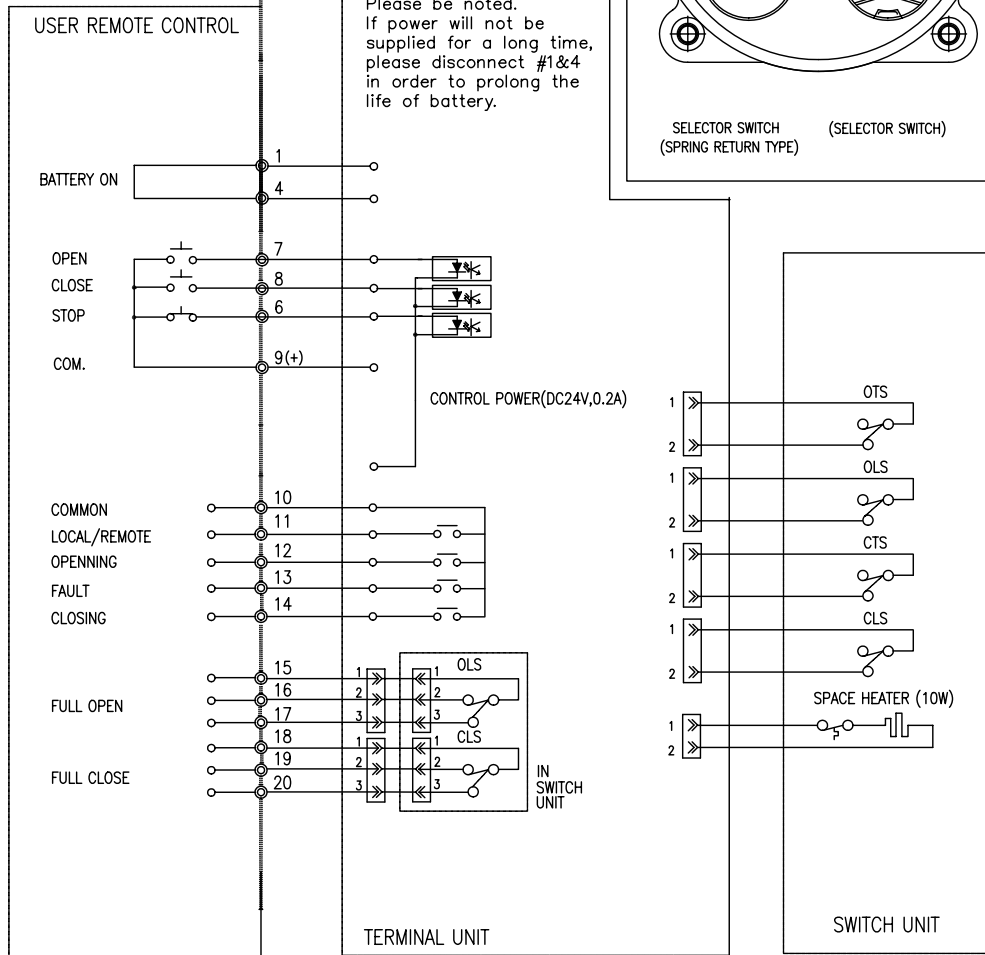
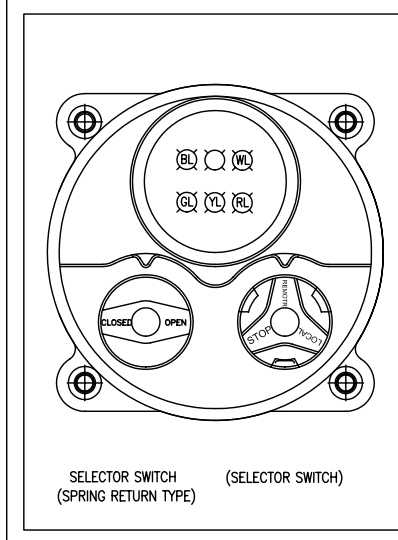
RBP CONTROL BOARD

DC MOTOR

** TERMINAL BLOCK **

1	13
2	14
3	15
4	16
5	17
6	18
7	19
8	20
9	21
10	22
11	23
12	24

- NOTE -
After Power supplied (#2&3), please connect #1&4 together. Please make sure that #1&4 is connected and the connection should be maintained during supplying power. Connected #1&4 is for usage of battery in case of Power-Failure. Please be noted. If power will not be supplied for a long time, please disconnect #1&4 in order to prolong the life of battery.



** NOTE **

Technical Explanation
 OLS : OPEN LIMIT SWITCH
 CLS : CLOSE LIMIT SWITCH
 OTS : OPEN TORQUE LIMIT SWITCH
 CTS : CLOSE TORQUE LIMIT SWITCH
 RL : RED LAMP FOR OPEN
 GL : GREEN LAMP FOR CLOSE
 YL : YELLOW LAMP FOR FAULT
 ◎ : MARKS FOR TERMINAL

BATTERY : LED LAMP MODE
 RL : RED LAMP FOR BAT 50%
 GL : GREEN LAMP FOR FULL RECHARGE
 BL : BLUE LAMP FOR 50 ~ 80%

WL : WHITE LAMP FOR POWER
 BL : BLUE LAMP FOR REMOTE

** LIMIT SWITCH CONTACT POSITIONS **

ROTOR	CON-TACT	VALVE OPENING (%)	
		0	100
OPEN (OLS)	1-3		
	1-2		
CLOSE (CLS)	1-3		
	1-2		

— : CONTACT ON - - - : CONTACT OFF

1 PHASE WIRING DIAGRAM
RBP

HQ-030	DWG. NO	HQ - 96000 B
HQ-020	DATE	2008.03.24
HQ-015	ISSUE REF.:	B
APPLICATION	ACTUATED SOLUTIONS LTD	
	TEL :	(01243) 827469
	FAX :	(01243) 829418

DOC : WD-01 1-09-2008